

MUNAZO Inc./Easy, Repeatable, Accurate, Fast. Trusted.



The Webscan Difference: ISO compliance with the touch of a button.



Every application. Every time.

Webscan was founded in 1995 with one singular goal: *to design and build the world's most accurate bar code verification systems.* Through optical, mechanical, and electronic technologies that power its offline and online systems, Webscan has earned an international reputation for delivering ease-of-use and unsurpassed accuracy, across every bar code application, every time. Today, leading packaging producers, defense, pharmaceutical companies, and retailers worldwide trust Webscan to be sure every bar code that goes to market complies with industry standards.

Proven technology from a proven leader!

True to form, Webscan provides complete verification for 1D and 2D bar codes according to established industry standards. Like the industry leading TruCheck™ off-line bar code verifier, TruCheck Inline™ processes bar codes strictly in accordance with ISO 15415 and 15416. Built in illumination and fixed focus produces accurate and consistent results every time. TruCheck Inline™ eliminates the time consuming process of checking bar codes manually. It provides the fastest response to bar code printing problems, reducing the waste created by printing poor quality codes.

System Operation

The TruCheck Inline™ system consists of a specialized high resolution, high speed imager with an integrated illumination module, a central processing unit, a motorized traverse and input encoder.

The encoder enables the system to accurately track movement of the target. Using the bar code positions that are easily setup by the operator the system automatically triggers on each position to capture an image of the bar code. It then processes the image and produces the bar code grade in real-time.

Every bar code grade is recorded in the data base, along with its location (page, column and cell). The results can be sorted and displayed according to a variety of criteria, including low grades or cell.

Fast and Foolproof!

But accuracy and consistency is only the beginning. From an intuitive set up screen (to define the positions of all the bar codes) to an easy to use database of results, TruCheck Inline grades every position on the repeat and gives operators the ability to easily catch printing problems as they occur guaranteeing your customer gets high quality bar codes.



SPECIFICATIONS

Symbologies:

Data Matrix, QR Code, GS1-DataBar (formerly RSS), GS1-Composite Symbology UPC/EAN, Code 128, Code 39, TLC-39, Codabar, PDF 417, Micro PDF 417 (limited to Field of View size)

Versions and X-Dimension Capability

Version	Lighting	Field of View	Min x Dim
Standard	45°	32mm x 24mm	7.5mil
Wide Angle	45°	40mm x 30mm	10mil

Options:

- GS1 Calibrated Conformance Test Card
- Extended Service Plans

Light Source:

- Narrow band LED

Features:

- CCD Imager with Integrated Illumination
- ISO grading
- Data export to printer, PDF file or Excel
- Fastest target speed 300 meters per minute
- Calibrated to NIST traceable standards
- Bar Code processing 10 per second (dependent on code size)
- Variable aperture size

Decoding/Grading Analysis Specifications:

Full ISO 15415 Grading A, B, C, D, F: Unused Error Correction, Modulation, Axial nonuniformity, Grid non-uniformity, Symbol Contrast, Reference Decode, Finder Pattern Damage, Bar Width Growth (X and Y), Quiet Zone, AIM DPM Grading: Cell Contrast, Cell Mod.

Physical Characteristics:

- Dimensions (LxWxD) 7.25" x 6.50" x 7"
- Weight: 4 lbs.

Environment:

- Temperature: 0-40°C
- Humidity: 5% - 95% noncondensing

Conformance:

- ISO 15415, 15426-2
- ISO 16022, 18004
- AIM DPM

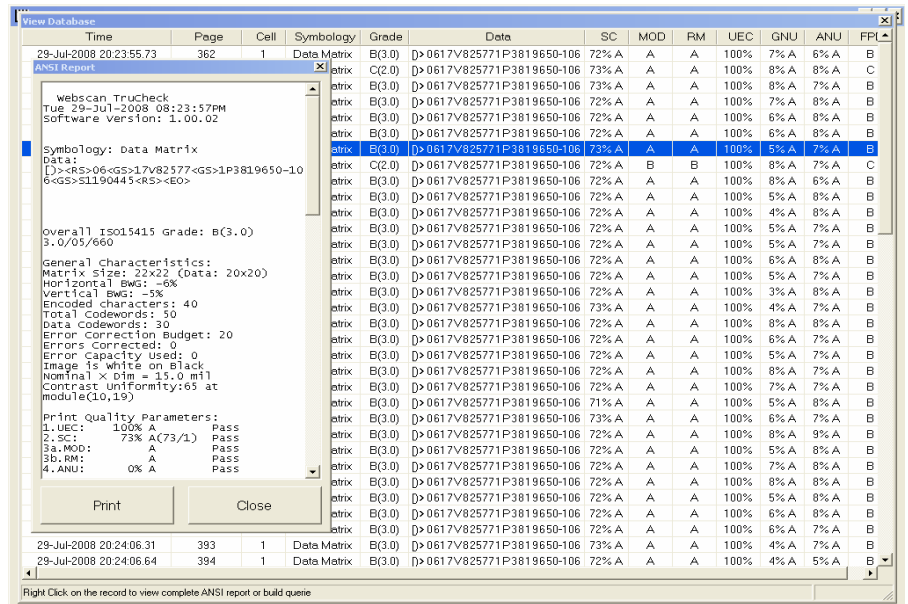
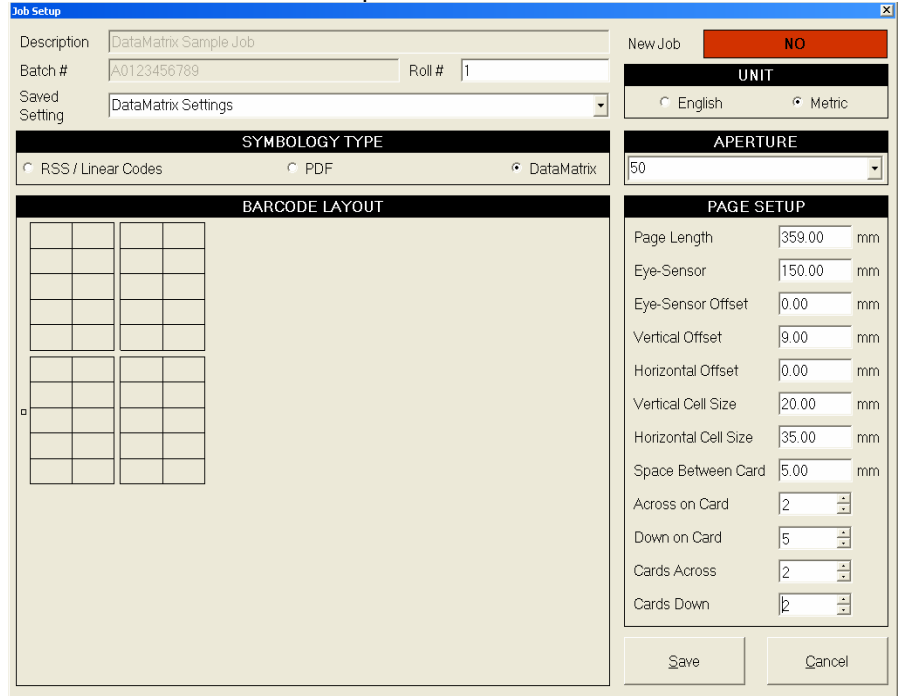
Working Distance:

Fixed distance 75mm from surface of imager to target

For more information, please contact:

Minimum hardware and system requirements:

- Pentium III 700 MHz; 512meg Ram; 1.2 Gig Hard drive with 100meg free
- Screen resolution 800x600; 1024x768 recommended; USB 2.0 port
- Supported Operating Systems: Windows 2000; Windows ME; Windows NT; Windows Server 2003 Service Pack 1 for Itanium-based Systems; Windows Server 2003 x64 editions; Windows XP; Windows XP Professional x64 Edition; Microsoft Windows NT 4.0 requires Service Pack 6a.



MUNAZO, Inc.
 KOBE FM,6-9Koyo-Chou Naka,Higashinada-Ku,Kobe,658-0032,JAPAN
 Tel +8178-857-5447 | Fax +8178-857-5443
http://en_munazo.us E-mail:munazo@munazo.jp